

Statement prepared by CMA on the basis of Data obtained from official site of the
Economic Advisor, Ministry of Commerce & Industry (www.eaindustry.nic.in)

(A) CEMENT PRODUCTION

(Million Tonnes)

MONTH	2015-2016		2014-2015		(%AGE) VARIATION OVER PREVIOUS YEAR		AVERAGE	
	FOR MONTH	CUM	FOR MONTH	CUM	MONTH	YEAR	2015-2016 (Apr- Oct)	2014-2015
Apr	23.42	23.42	23.98	23.98	-2.35	-2.35	23.42	23.98
May	24.26	47.68	23.65	47.64	2.57	0.09	23.84	23.82
Jun	23.57	71.25	22.96	70.60	2.63	0.92	23.75	23.53
Jul	23.00	94.24	22.70	93.30	1.31	1.01	23.56	23.32
Aug	21.62	115.86	20.51	113.81	5.39	1.80	23.17	22.76
Sep	21.46	137.33	21.80	135.61	-1.54	1.26	22.89	22.60
Oct	22.73	160.06	20.36	155.97	11.68	2.62	22.87	22.28
Nov			20.92	176.89				22.11
Dec			23.15	200.04				22.23
Jan			23.81	223.85				22.38
Feb			22.56	246.40				22.40
Mar			23.84	270.24				22.52

(B) COAL PRODUCTION

(Million Tonnes)

MONTH	2015-2016		2014-2015		(%AGE) VARIATION OVER PREVIOUS YEAR		AVERAGE	
	FOR MONTH	CUM	FOR MONTH	CUM	MONTH	YEAR	2015-2016 (Apr- Oct)	2014-2015
Apr	48.97	48.97	45.38	45.38	7.91	7.91	48.97	45.38
May	49.14	98.10	45.58	90.96	7.81	7.86	49.05	45.48
Jun	46.49	144.59	43.75	134.71	6.25	7.34	48.20	44.90
Jul	42.27	186.86	42.16	176.87	0.27	5.65	46.72	44.22
Aug	43.63	230.49	43.47	220.33	0.38	4.61	46.10	44.07
Sep	44.95	275.44	44.12	264.45	1.87	4.15	45.91	44.08
Oct	52.85	328.29	49.73	314.18	6.28	4.49	46.90	44.88
Nov			54.62	368.79				46.10
Dec			58.37	427.16				47.46
Jan			58.08	485.24				48.52
Feb			58.34	543.58				49.42
Mar			69.20	612.78				51.06

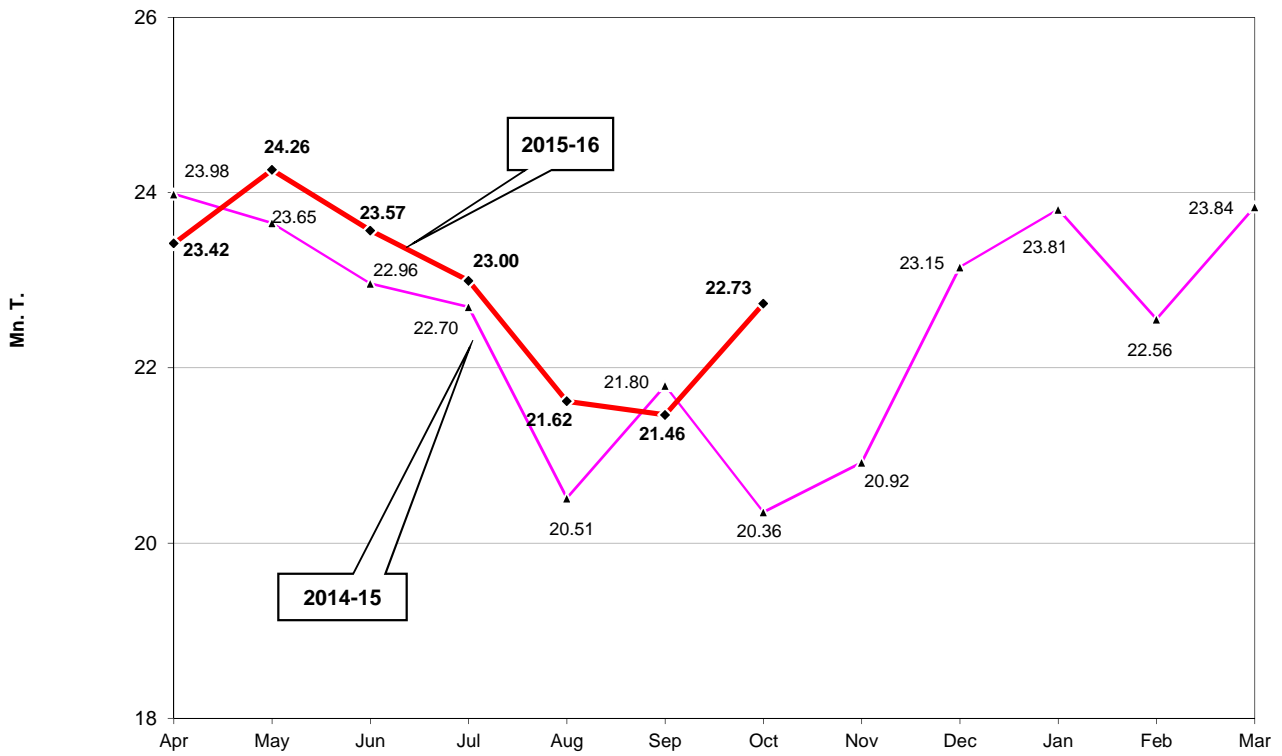
(C) STEEL PRODUCTION

(Million Tonnes)

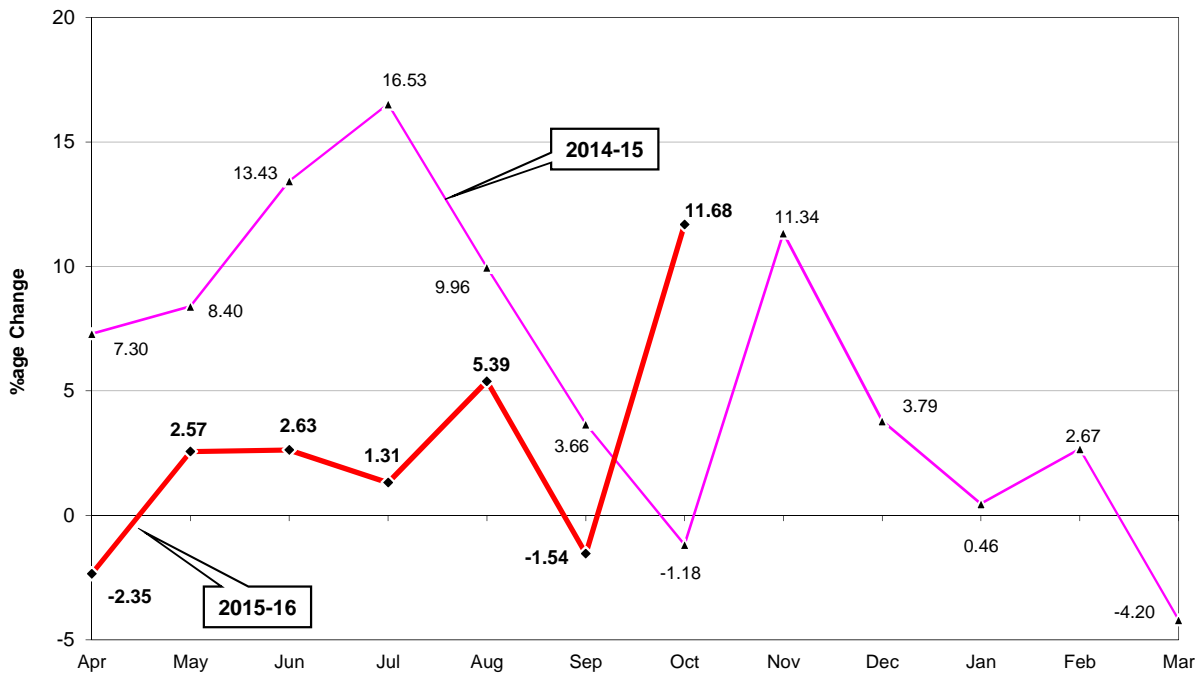
MONTH	2015-2016		2014-2015		(%AGE) VARIATION OVER PREVIOUS YEAR		AVERAGE	
	FOR MONTH	CUM	FOR MONTH	CUM	MONTH	YEAR	2015-2016 (Apr- Oct)	2014-2015
Apr	7.30	7.30	7.25	7.25	0.63	0.63	7.30	7.25
May	8.40	15.70	8.19	15.44	2.61	1.68	7.85	7.72
Jun	8.02	23.72	7.64	23.09	4.91	2.75	7.91	7.70
Jul	7.48	31.20	7.68	30.76	-2.57	1.42	7.80	7.69
Aug	7.16	38.36	7.61	38.37	-5.90	-0.03	7.67	7.67
Sep	7.16	45.52	7.34	45.71	-2.45	-0.42	7.59	7.62
Oct	7.59	53.12	7.68	53.40	-1.18	-0.53	7.59	7.63
Nov			7.10	60.50				7.56
Dec			7.54	68.04				7.56
Jan			7.94	75.97				7.60
Feb			7.10	83.08				7.55
Mar			7.88	90.96				7.58

Graphs prepared on the basis of data obtained from official site of the Economic Advisor,
Ministry of Commerce & Industry (www.eaindustry.nic.in)

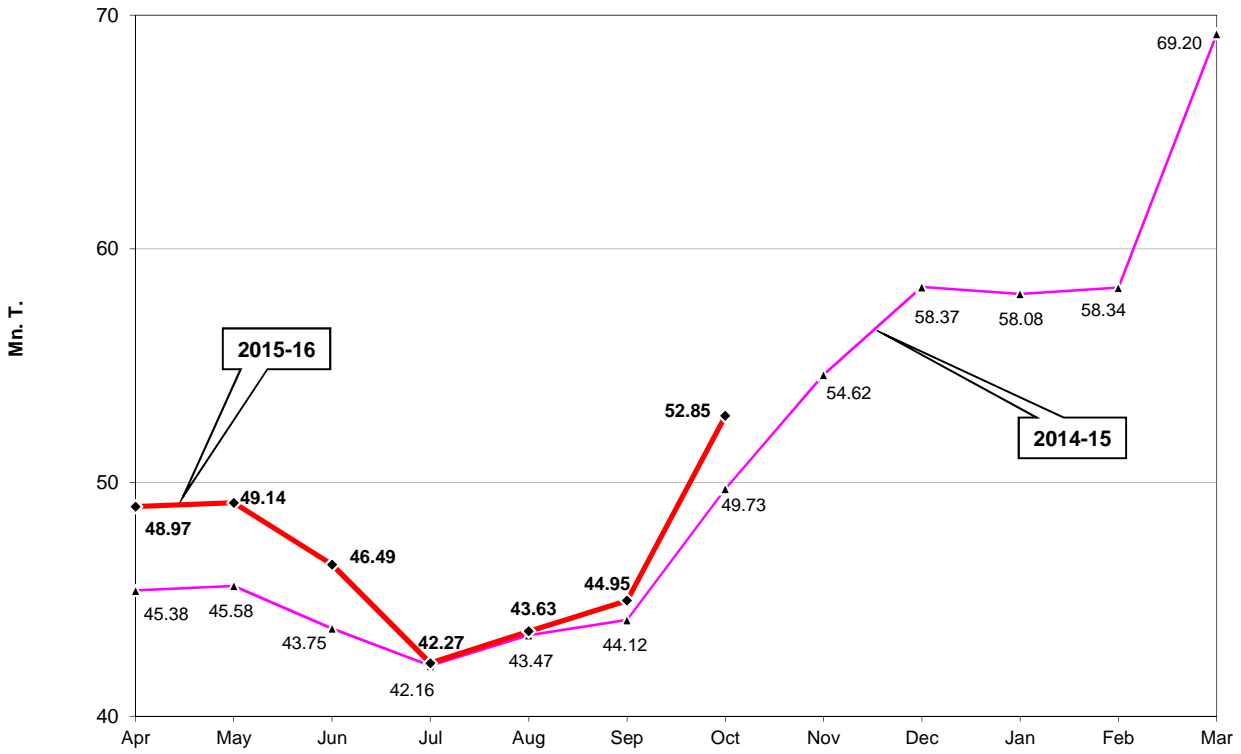
Month-wise Cement Production



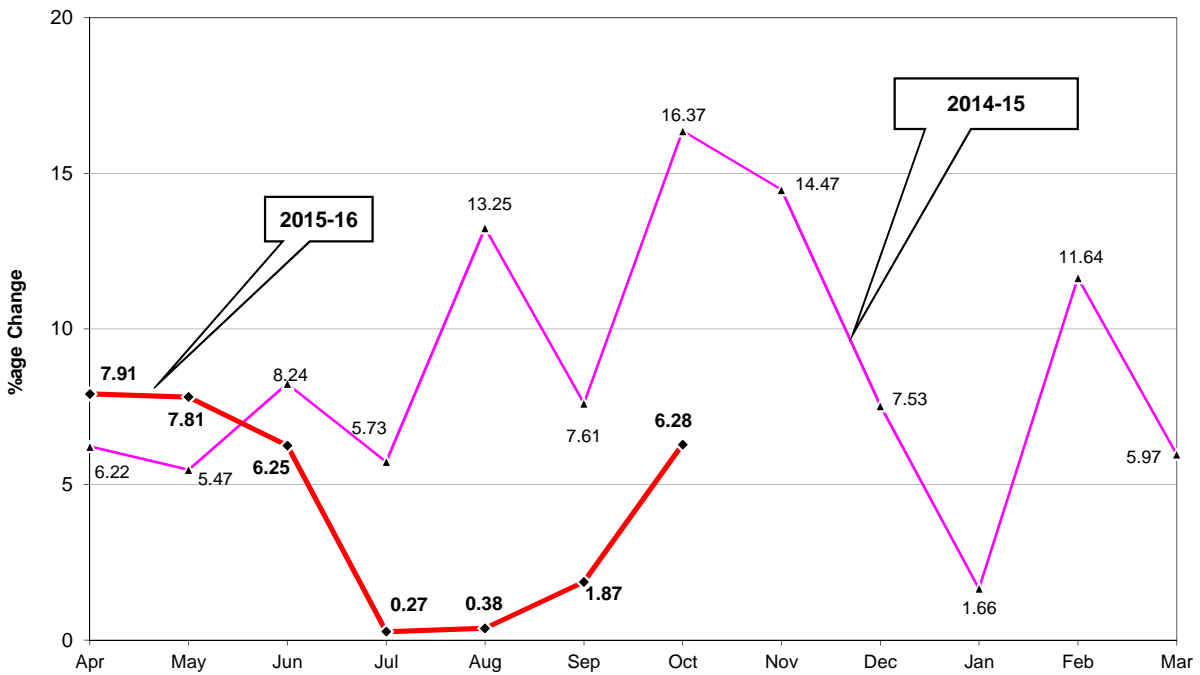
%age Change in Cement Production on MoM Basis



Month-wise Coal Production

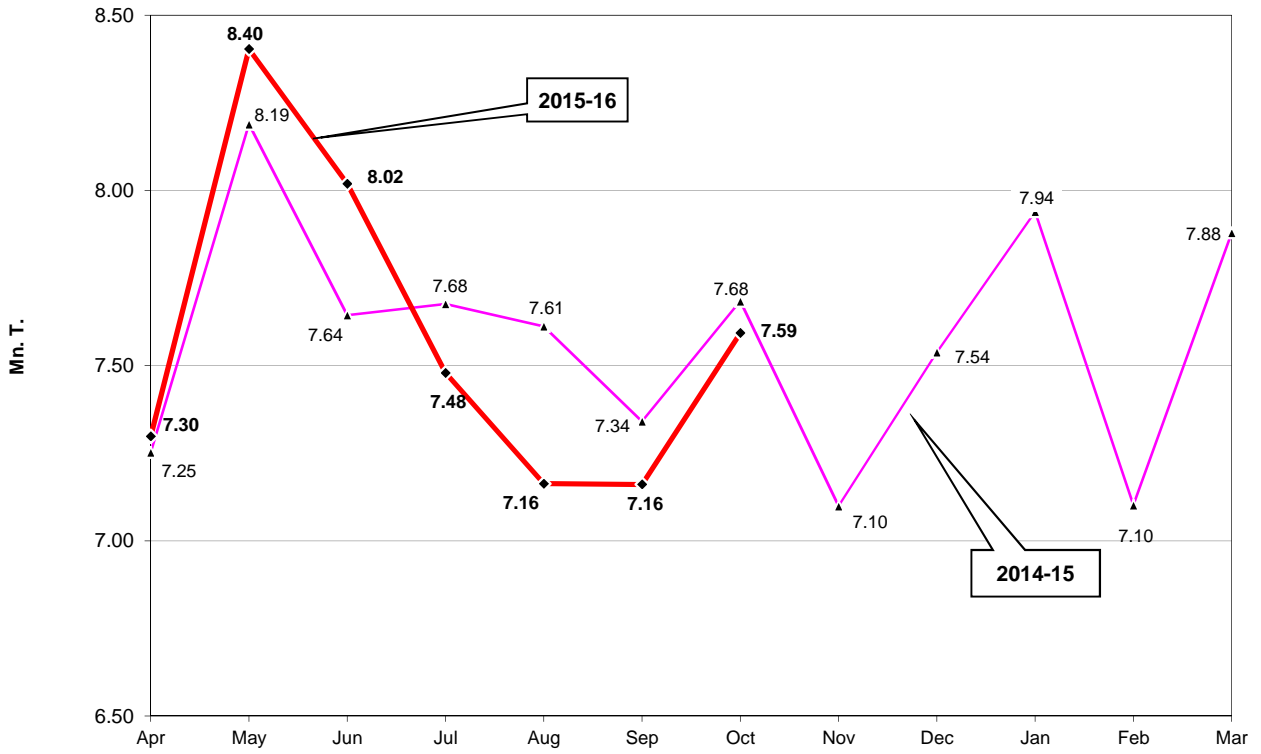


%age Change in Coal Production on MoM Basis

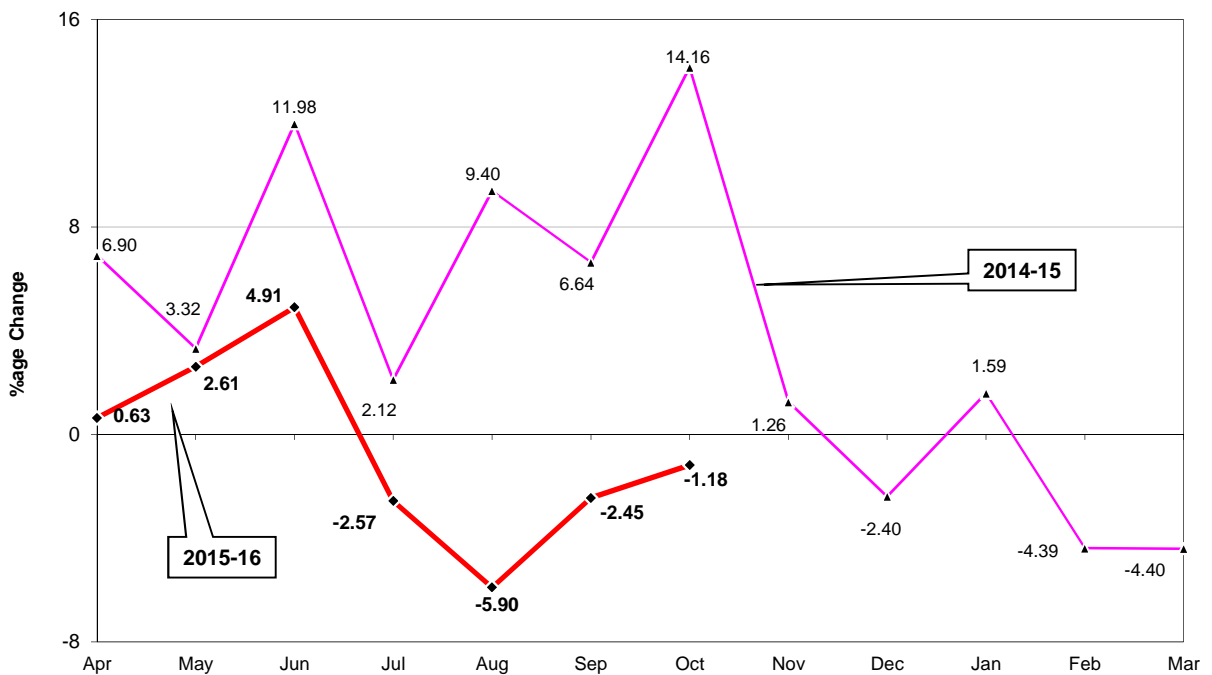


Graphs prepared on the basis of data obtained from official site of the Economic Advisor,
Ministry of Commerce & Industry (www.eaindustry.nic.in)

Month-wise Steel Production



%age Change in Steel Production on MoM Basis



Performance of Eight Core Industries
Yearly Index & Growth Rate Base Year:
 2004-05=100

INDEX

Sector	Weight	2010-11	2011-12	2012-13	2013-14	2014-15	Apr-Oct 2014-15	Apr-Oct 2015-16
Coal	4.379	139.7	141.5	148.1	150.0	162.7	143.0	149.4
Crude Oil	5.216	111.0	112.1	111.4	111.2	110.2	110.1	110.1
Natural Gas	1.708	164.4	149.7	128.1	111.5	105.8	106.1	103.9
Refinery Products	5.939	129.7	133.7	172.5	175.0	175.6	172.3	176.5
Fertilizers	1.254	103.4	103.8	100.2	101.8	101.7	100.3	109.5
Steel	6.684	157.7	174.0	181.1	201.9	209.0	210.4	209.3
Cement	2.406	164.2	175.2	188.7	194.5	205.4	203.2	208.6
Electricity	10.316	138.1	149.3	155.3	164.6	178.2	181.6	190.3
Overall Index	37.903	138.4	145.3	154.7	161.2	168.0	166.2	170.3

GROWTH RATES (in %)

Sector	Weight	2010-11	2011-12	2012-13	2013-14	2014-15	Apr-Oct 2014-15	Apr-Oct 2015-16
Coal	4.379	-0.2	1.3	4.6	1.3	8.5	9.0	4.5
Crude Oil	5.216	11.9	1.0	-0.6	-0.2	-0.9	-0.9	0.03
Natural Gas	1.708	10.0	-8.9	-14.5	-13.0	-5.1	-5.5	-2.1
Refinery Products [#]	5.939	3.0	3.1	29.0	1.5	0.3	-1.7	2.4
Fertilizers	1.254	0.0	0.4	-3.4	1.5	-0.1	-1.1	9.2
Steel	6.684	13.2	10.3	4.1	11.5	3.5	7.6	-0.5
Cement	2.406	4.5	6.7	7.7	3.1	5.6	8.2	2.6
Electricity	10.316	5.6	8.1	4.0	6.0	8.2	10.8	4.7
Overall Index	37.903	6.6	5.0	6.5	4.2	4.2	5.6	2.5

[#]Refinery Products' yearly growth rate of 2012-13 is not comparable with other years on account of inclusion of RIL (SEZ) production data since April, 2012.

Performance of Eight Core Industries

Monthly Index & Growth Rate

Base Year: 2004-05=100

INDEX

Sector	Coal	Crude Oil	Natural Gas	Refinery Products	Fertilizers	Steel	Cement	Electricity	Overall Index
Weight	4.379	5.216	1.708	5.939	1.254	6.684	2.406	10.316	37.903
Oct-14	158.4	113.6	107.6	180.5	105.1	211.9	185.7	184.9	170.0
Nov-14	174.0	111.0	106.2	181.3	104.4	195.8	190.8	174.6	166.2
Dec-14	186.0	113.4	109.4	186.2	108.5	207.9	211.2	175.7	172.7
Jan-15	185.0	112.6	108.5	185.7	111.6	218.9	217.2	175.7	174.8
Feb-15	185.9	101.5	95.8	166.0	97.5	195.9	205.7	164.8	161.5
Mar-15	220.4	113.9	107.2	182.5	96.9	217.3	217.4	175.9	177.8
Apr-15	156.0	106.6	100.9	161.3	87.3	201.3	213.6	176.0	162.4
May-15	156.5	112.5	107.8	186.0	101.8	231.7	221.3	194.0	178.6
Jun-15	148.1	109.5	102.9	183.9	105.3	221.1	215.0	181.8	171.2
Jul-15	134.7	110.7	99.0	176.2	111.3	206.3	209.7	190.3	168.0
Aug-15	139.0	112.8	107.2	185.1	119.0	197.5	197.2	194.3	169.6
Sep-15	143.2	107.4	103.9	170.3	119.4	197.5	195.8	194.4	166.8
Oct-15	168.4	111.3	105.6	172.5	122.1	209.4	207.4	201.1	175.4

GROWTH RATES (in %)

Sector	Coal	Crude Oil	Natural Gas	Refinery Products	Fertilizers	Steel	Cement	Electricity	Overall Index
Weight	4.379	5.216	1.708	5.939	1.254	6.684	2.406	10.316	37.903
Oct-14	16.4	1.0	-3.9	4.2	-7.0	14.2	-1.2	13.7	9.0
Nov-14	14.5	-0.1	-2.9	8.1	-2.8	1.3	11.3	10.2	6.7
Dec-14	7.5	-1.4	-3.5	6.1	-1.6	-2.4	3.8	3.7	2.4
Jan-15	1.7	-2.3	-6.6	4.7	7.1	1.6	0.5	2.7	1.8
Feb-15	11.6	-1.9	-8.1	-1.0	-0.4	-4.4	2.7	5.2	1.4
Mar-15	6.0	1.7	-1.5	-1.3	5.2	-4.4	-4.2	1.7	-0.1
Apr-15	7.9	-2.7	-3.6	-2.9	0.0	0.6	-2.4	-1.1	-0.4
May-15	7.8	0.8	-3.1	7.9	1.3	2.6	2.6	5.5	4.4
Jun-15	6.3	-0.7	-5.9	7.5	5.8	4.9	2.6	0.2	3.0
Jul-15	0.3	-0.4	-4.4	2.9	8.6	-2.6	1.3	3.5	1.1
Aug-15	0.4	5.6	3.7	5.8	12.6	-5.9	5.4	5.6	2.6
Sep-15	1.9	-0.1	0.9	0.5	18.1	-2.5	-1.5	10.8	3.2
Oct-15	6.3	-2.1	-1.8	-4.4	16.2	-1.2	11.7	8.8	3.2