

(A) CEMENT PRODUCTION

(Million Tonnes)

MONTH	2015-2016		2014-2015		(%AGE) VARIATION OVER PREVIOUS YEAR		AVERAGE	
	FOR MONTH	CUM	FOR MONTH	CUM	MONTH	YEAR	2015-2016 (Apr)	2014-2015
Apr	23.42	23.42	23.98	23.98	-2.35	-2.35	23.42	23.98
May			23.72	47.71				23.85
Jun			22.99	70.70				23.57
Jul			22.68	93.38				23.34
Aug			20.58	113.95				22.79
Sep			21.70	135.66				22.61
Oct			20.39	156.04				22.29
Nov			20.92	176.96				22.12
Dec			23.15	200.11				22.23
Jan			23.81	223.92				22.39
Feb			22.56	246.48				22.41
Mar			23.84	270.32				22.53

(B) COAL PRODUCTION

(Million Tonnes)

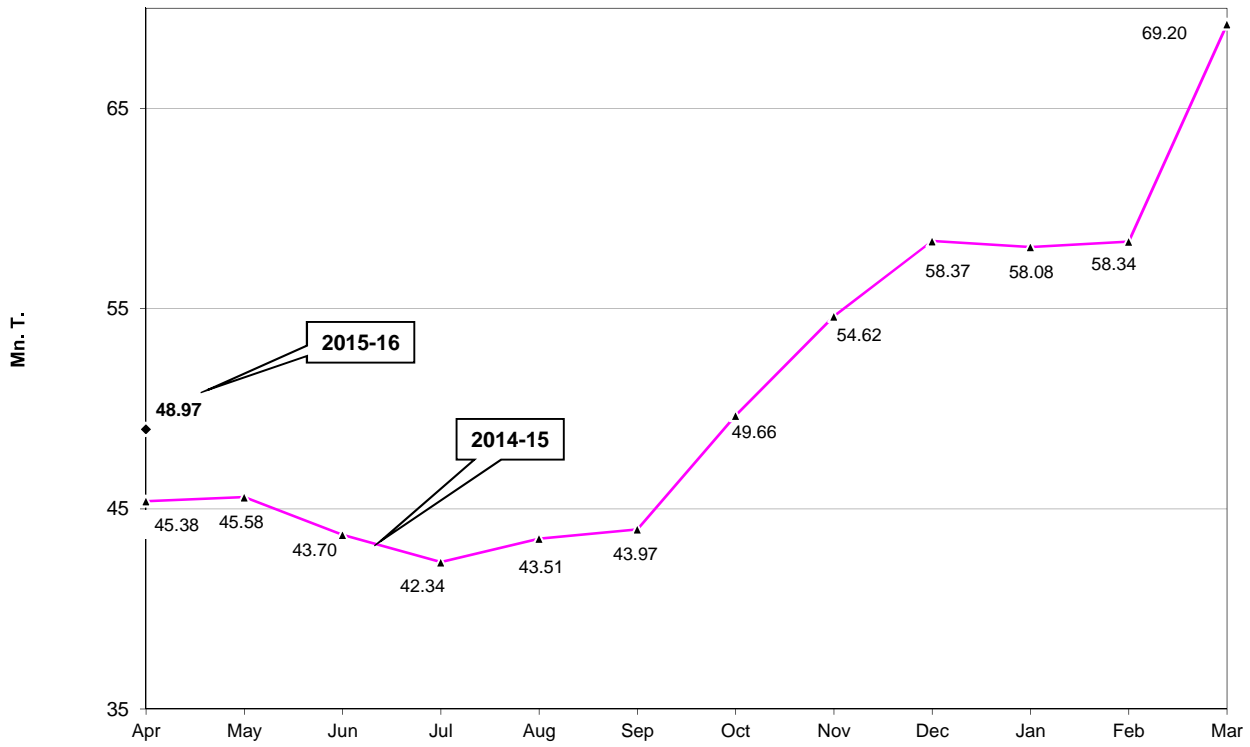
MONTH	2015-2016		2014-2015		(%AGE) VARIATION OVER PREVIOUS YEAR		AVERAGE	
	FOR MONTH	CUM	FOR MONTH	CUM	MONTH	YEAR	2015-2016 (Apr)	2014-2015
Apr	48.97	48.97	45.38	45.38	7.91	7.91	48.97	45.38
May			45.58	90.96				45.48
Jun			43.70	134.66				44.89
Jul			42.34	177.00				44.25
Aug			43.51	220.51				44.10
Sep			43.97	264.48				44.08
Oct			49.66	314.13				44.88
Nov			54.62	368.75				46.09
Dec			58.37	427.12				47.46
Jan			58.08	485.19				48.52
Feb			58.34	543.54				49.41
Mar			69.20	612.73				51.06

(C) STEEL PRODUCTION

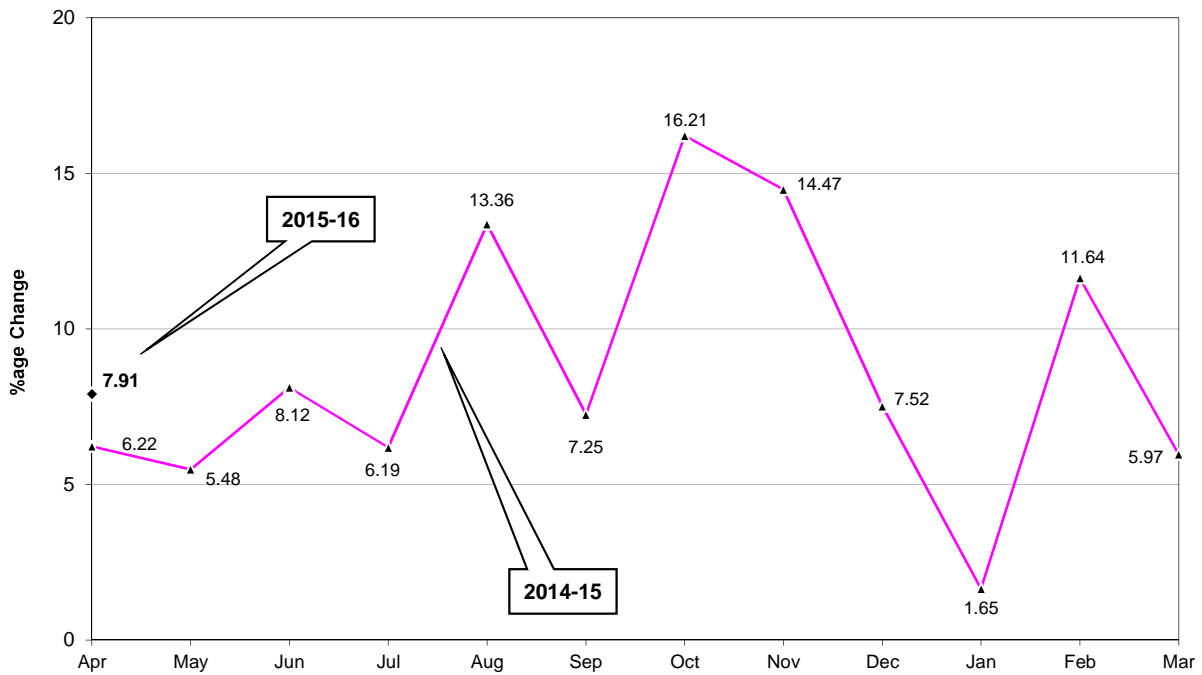
(Million Tonnes)

MONTH	2015-2016		2014-2015		(%AGE) VARIATION OVER PREVIOUS YEAR		AVERAGE	
	FOR MONTH	CUM	FOR MONTH	CUM	MONTH	YEAR	2015-2016 (Apr)	2014-2015
Apr	7.30	7.30	7.25	7.25	0.63	0.63	7.30	7.25
May			7.77	15.02				7.51
Jun			7.11	22.13				7.38
Jul			7.27	29.40				7.35
Aug			7.59	36.99				7.40
Sep			7.16	44.15				7.36
Oct			6.88	51.03				7.29
Nov			7.10	58.13				7.27
Dec			7.54	65.67				7.30
Jan			7.94	73.61				7.36
Feb			7.10	80.71				7.34
Mar			7.88	88.59				7.38

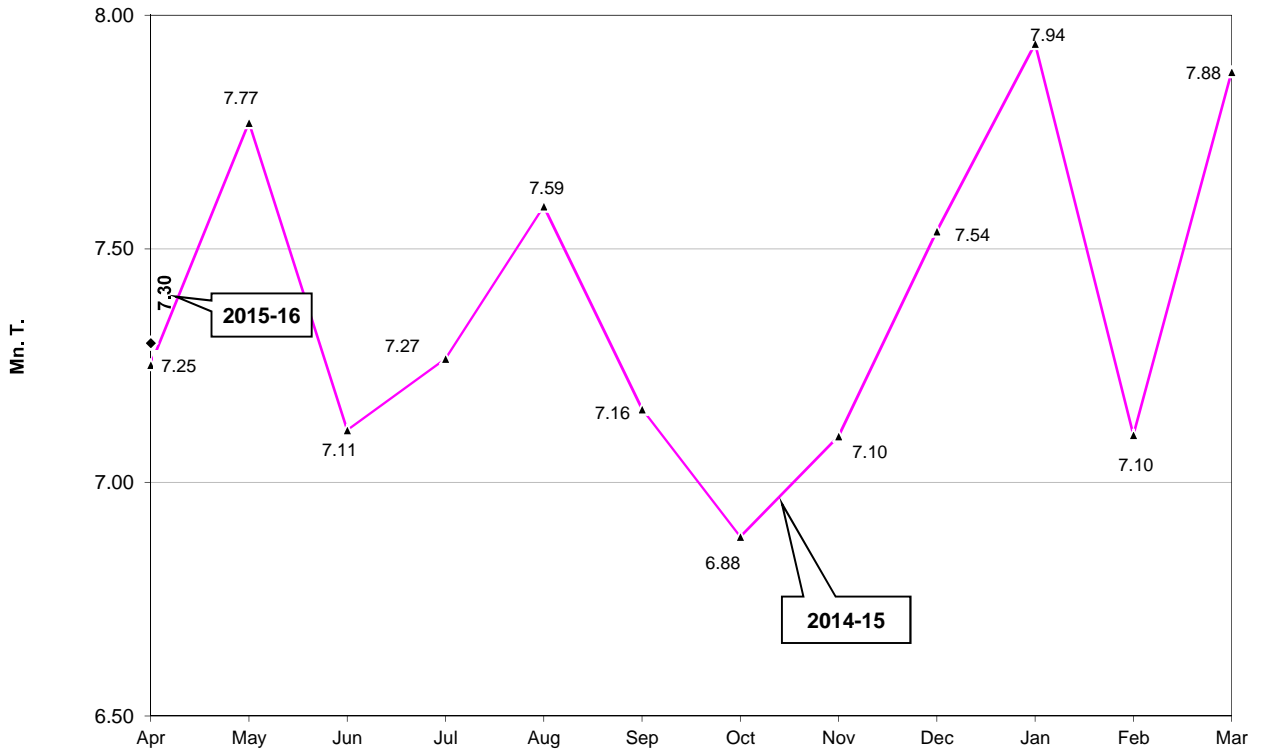
Month-wise Coal Production



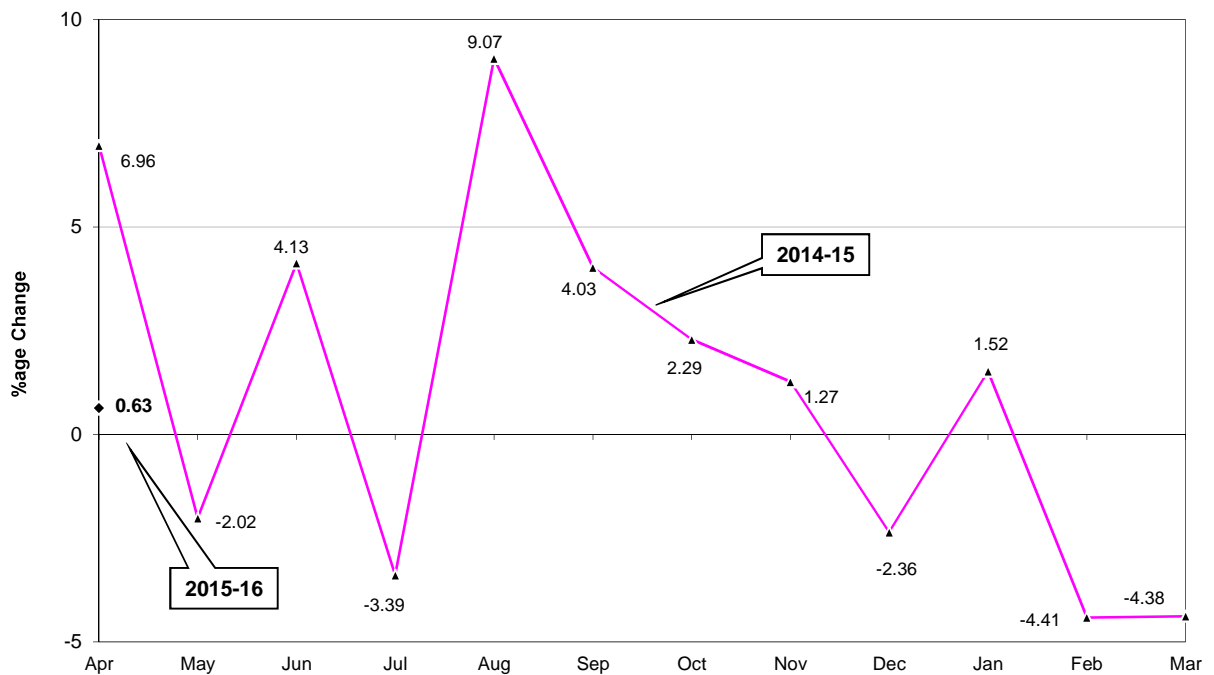
%age Change in Coal Production on MoM Basis



Month-wise Steel Production



%age Change in Steel Production on MoM Basis



Performance of Eight Core Industries
Yearly Index & Growth Rate Base
Year: 2004-05=100

INDEX

Sector	Weight	2009-10	2010-11	2011-12	2012-13	2013-14	Apr-Mar 2014-15
Coal	4.379	140.0	139.7	141.5	148.1	150.0	162.7
Crude Oil	5.216	99.1	111.0	112.1	111.4	111.2	110.3
Natural Gas	1.708	149.5	164.4	149.7	128.1	111.5	105.7
Refinery Products	5.939	125.9	129.7	133.7	172.5	175.0	175.7
Fertilizers	1.254	103.4	103.4	103.8	100.2	101.8	101.7
Steel	6.684	139.3	157.7	174.0	181.1	201.9	203.6
Cement	2.406	157.1	164.2	175.2	188.7	194.5	205.5
Electricity	10.316	130.8	138.1	149.3	155.3	164.6	177.9
Overall Index	37.903	129.9	138.4	145.3	154.7	161.2	167.0

GROWTH RATES (in %)

Sector	Weight	2009-10	2010-11	2011-12	2012-13	2013-14	Apr-Mar 2014-15
Coal	4.379	8.1	-0.2	1.3	4.6	1.3	8.4
Crude Oil	5.216	0.5	11.9	1.0	-0.6	-0.2	-0.9
Natural Gas	1.708	44.6	10.0	-8.9	-14.5	-13.0	-5.2
Refinery Products [#]	5.939	-0.4	3.0	3.1	29.0	1.5	0.4
Fertilizers	1.254	12.7	0.0	0.4	-3.4	1.5	-0.1
Steel	6.684	6.0	13.2	10.3	4.1	11.5	0.8
Cement	2.406	10.5	4.5	6.7	7.7	3.1	5.7
Electricity	10.316	6.2	5.6	8.1	4.0	6.0	8.1
Overall Index	37.903	6.6	6.6	5.0	6.5	4.2	3.6

[#]Refinery Products' yearly growth rate of 2012-13 is not comparable with other years on account of inclusion of RIL (SEZ) production data since April, 2012.

Performance of Eight Core Industries
Monthly Index & Growth Rate
 Base Year: 2004-05=100

INDEX

Sector	Coal	Crude Oil	Natural Gas	Refinery Products	Fertilizers	Steel	Cement	Electricity	Overall Index
Weight	4.379	5.216	1.708	5.939	1.254	6.684	2.406	10.316	37.903
Apr-14	144.6	109.6	104.6	166.2	87.4	200.0	218.8	178.0	163.0
May-14	145.2	111.6	111.2	171.6	100.5	214.3	216.4	183.2	168.7
Jun-14	139.2	110.4	109.4	173.3	99.5	196.1	209.7	181.5	163.9
Jul-14	134.9	111.1	103.5	170.8	102.5	200.4	206.9	182.8	163.9
Aug-14	138.6	106.8	103.1	175.1	105.7	209.3	187.7	183.6	165.1
Sep-14	140.1	107.5	102.6	169.7	101.1	197.4	198.0	175.3	160.6
Oct-14	158.2	113.6	107.2	180.5	105.1	189.8	185.9	184.1	165.9
Nov-14	174.0	111.0	106.2	181.3	104.4	195.8	190.8	174.6	166.2
Dec-14	186.0	113.4	109.4	186.2	108.5	207.9	211.2	175.7	172.7
Jan-15	185.0	112.6	108.5	185.7	111.6	218.9	217.2	175.7	174.8
Feb-15	185.9	101.5	95.8	166.0	97.5	195.9	205.7	164.8	161.5
Mar-15	220.4	113.9	107.2	182.5	96.9	217.3	217.4	175.9	177.8
Apr-15	156.0	106.6	100.9	161.3	87.3	201.3	213.6	176.0	162.4

GROWTH RATES (in %)

Sector	Coal	Crude Oil	Natural Gas	Refinery Products	Fertilizers	Steel	Cement	Electricity	Overall Index
Weight	4.379	5.216	1.708	5.939	1.254	6.684	2.406	10.316	37.903
Apr-14	6.2	-0.1	-7.7	-1.9	11.1	6.9	7.3	11.9	5.7
May-14	5.5	-0.3	-2.2	-2.3	17.6	-2.0	8.7	6.3	2.3
Jun-14	8.1	0.1	-1.7	1.2	-1.0	4.2	13.6	15.7	7.3
Jul-14	6.2	-1.0	-9.0	-5.5	-4.2	-3.4	16.5	11.2	2.7
Aug-14	13.4	-4.9	-8.3	-4.3	-4.3	9.1	10.3	12.6	5.8
Sep-14	7.2	-1.1	-6.2	-2.5	-11.6	4.0	3.2	3.8	1.9
Oct-14	16.2	1.0	-4.2	4.2	-7.0	2.3	-1.0	13.2	6.3
Nov-14	14.5	-0.1	-2.9	8.1	-2.8	1.3	11.3	10.2	6.7
Dec-14	7.5	-1.4	-3.5	6.1	-1.6	-2.4	3.8	3.7	2.4
Jan-15	1.7	-2.3	-6.6	4.7	7.1	1.6	0.5	2.7	1.8
Feb-15	11.6	-1.9	-8.1	-1.0	-0.4	-4.4	2.7	5.2	1.4
Mar-15	6.0	1.7	-1.5	-1.3	5.2	-4.4	-4.2	1.7	-0.1
Apr-15	7.9	-2.7	-3.6	-2.9	-0.04	0.6	-2.4	-1.1	-0.4
