

(A) CEMENT PRODUCTION

(Million Tonnes)

| MONTH | 2015-2016 | | 2014-2015 | | (%AGE) VARIATION OVER PREVIOUS YEAR | | AVERAGE | |
|-------|-----------|--------|-----------|--------|---|-------|-------------------------|-----------|
| | FOR MONTH | CUM | FOR MONTH | CUM | MONTH | YEAR | 2015-2016 (Apr- Dec) | 2014-2015 |
| | | | | | | | | |
| Apr | 23.42 | 23.42 | 23.98 | 23.98 | -2.35 | -2.35 | 23.42 | 23.98 |
| May | 24.26 | 47.68 | 23.65 | 47.64 | 2.57 | 0.09 | 23.84 | 23.82 |
| Jun | 23.57 | 71.25 | 22.96 | 70.60 | 2.63 | 0.92 | 23.75 | 23.53 |
| Jul | 23.00 | 94.24 | 22.70 | 93.30 | 1.31 | 1.01 | 23.56 | 23.32 |
| Aug | 21.62 | 115.86 | 20.51 | 113.81 | 5.39 | 1.80 | 23.17 | 22.76 |
| Sep | 21.46 | 137.33 | 21.80 | 135.61 | -1.54 | 1.26 | 22.89 | 22.60 |
| Oct | 22.73 | 160.06 | 20.36 | 155.97 | 11.68 | 2.62 | 22.87 | 22.28 |
| Nov | 20.38 | 180.44 | 20.76 | 176.72 | -1.79 | 2.11 | 22.56 | 22.09 |
| Dec | 23.89 | 204.33 | 23.15 | 199.87 | 3.17 | 2.23 | 22.70 | 22.21 |
| Jan | | | 23.81 | 223.68 | | | | 22.37 |
| Feb | | | 22.56 | 246.24 | | | | 22.39 |
| Mar | | | 23.84 | 270.07 | | | | 22.51 |

(B) COAL PRODUCTION

(Million Tonnes)

| MONTH | 2015-2016 | | 2014-2015 | | (%AGE) VARIATION OVER PREVIOUS YEAR | | AVERAGE | |
|-------|-----------|--------|-----------|--------|---|------|-------------------------|-----------|
| | FOR MONTH | CUM | FOR MONTH | CUM | MONTH | YEAR | 2015-2016 (Apr- Dec) | 2014-2015 |
| | | | | | | | | |
| Apr | 48.97 | 48.97 | 45.38 | 45.38 | 7.91 | 7.91 | 48.97 | 45.38 |
| May | 49.14 | 98.10 | 45.58 | 90.96 | 7.81 | 7.86 | 49.05 | 45.48 |
| Jun | 46.49 | 144.59 | 43.75 | 134.71 | 6.25 | 7.34 | 48.20 | 44.90 |
| Jul | 42.27 | 186.86 | 42.16 | 176.87 | 0.27 | 5.65 | 46.72 | 44.22 |
| Aug | 43.63 | 230.49 | 43.47 | 220.33 | 0.38 | 4.61 | 46.10 | 44.07 |
| Sep | 44.95 | 275.44 | 44.12 | 264.45 | 1.87 | 4.15 | 45.91 | 44.08 |
| Oct | 52.85 | 328.29 | 49.73 | 314.18 | 6.28 | 4.49 | 46.90 | 44.88 |
| Nov | 56.59 | 384.88 | 54.68 | 368.86 | 3.49 | 4.34 | 48.11 | 46.11 |
| Dec | 61.95 | 446.82 | 58.37 | 427.23 | 6.13 | 4.59 | 49.65 | 47.47 |
| Jan | | | 58.08 | 485.30 | | | | 48.53 |
| Feb | | | 58.34 | 543.64 | | | | 49.42 |
| Mar | | | 69.20 | 612.84 | | | | 51.07 |

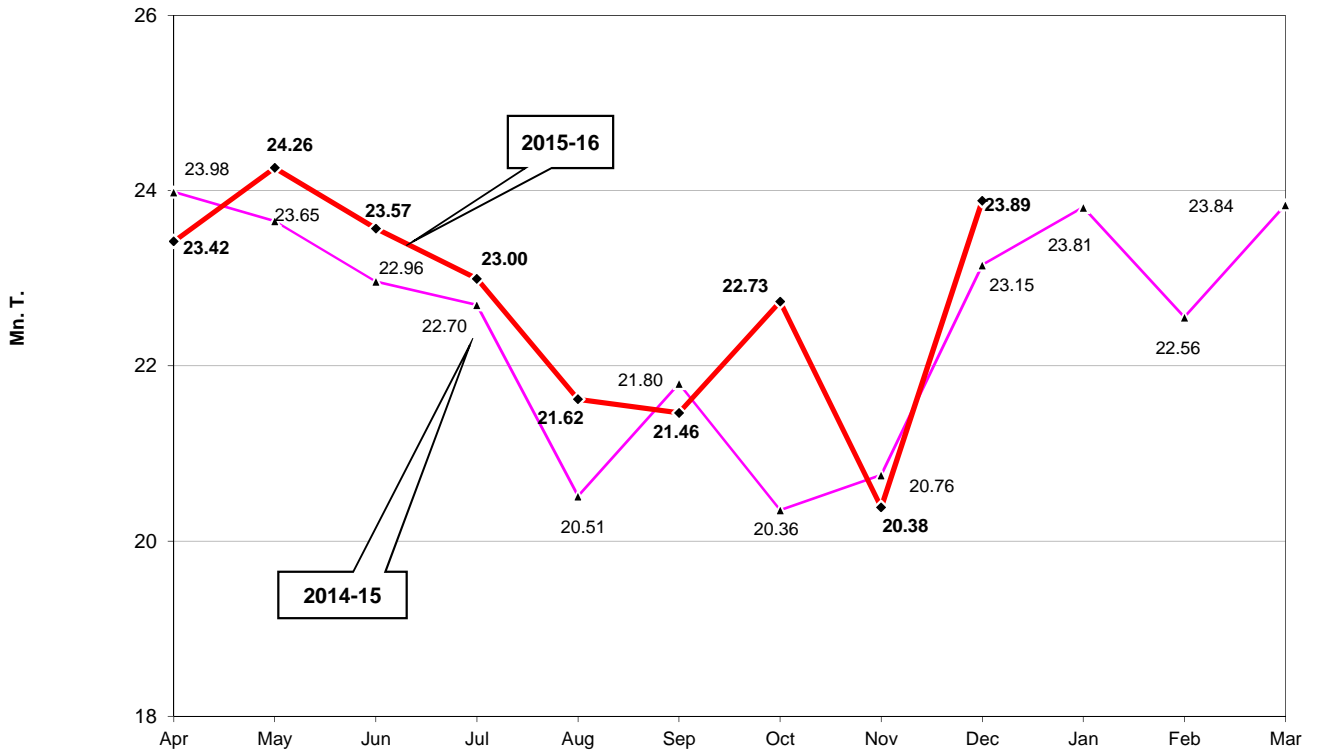
(C) STEEL PRODUCTION

(Million Tonnes)

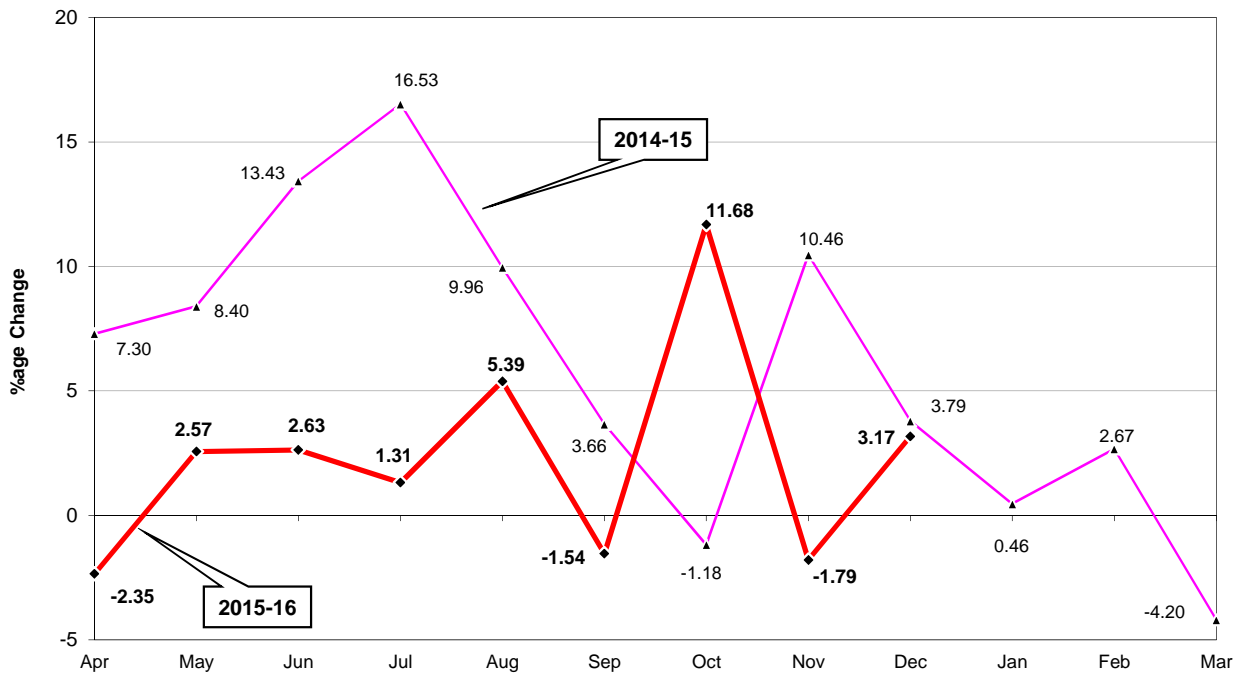
| MONTH | 2015-2016 | | 2014-2015 | | (%AGE) VARIATION OVER PREVIOUS YEAR | | AVERAGE | |
|-------|-----------|-------|-----------|-------|---|-------|-------------------------|-----------|
| | FOR MONTH | CUM | FOR MONTH | CUM | MONTH | YEAR | 2015-2016 (Apr- Dec) | 2014-2015 |
| | | | | | | | | |
| Apr | 7.30 | 7.30 | 7.25 | 7.25 | 0.63 | 0.63 | 7.30 | 7.25 |
| May | 8.40 | 15.70 | 8.19 | 15.44 | 2.61 | 1.68 | 7.85 | 7.72 |
| Jun | 8.02 | 23.72 | 7.64 | 23.09 | 4.91 | 2.75 | 7.91 | 7.70 |
| Jul | 7.48 | 31.20 | 7.68 | 30.76 | -2.57 | 1.42 | 7.80 | 7.69 |
| Aug | 7.16 | 38.36 | 7.61 | 38.37 | -5.90 | -0.03 | 7.67 | 7.67 |
| Sep | 7.16 | 45.52 | 7.34 | 45.71 | -2.45 | -0.42 | 7.59 | 7.62 |
| Oct | 7.59 | 53.12 | 7.68 | 53.40 | -1.18 | -0.53 | 7.59 | 7.63 |
| Nov | 7.06 | 60.17 | 7.71 | 61.11 | -8.43 | -1.53 | 7.52 | 7.64 |
| Dec | 7.38 | 67.56 | 7.73 | 68.83 | -4.44 | -1.85 | 7.51 | 7.65 |
| Jan | | | 7.94 | 76.77 | | | | 7.68 |
| Feb | | | 7.10 | 83.87 | | | | 7.62 |
| Mar | | | 7.88 | 91.75 | | | | 7.65 |

Graphs prepared on the basis of data obtained from official site of the Economic Advisor,
Ministry of Commerce & Industry (www.eaindustry.nic.in)

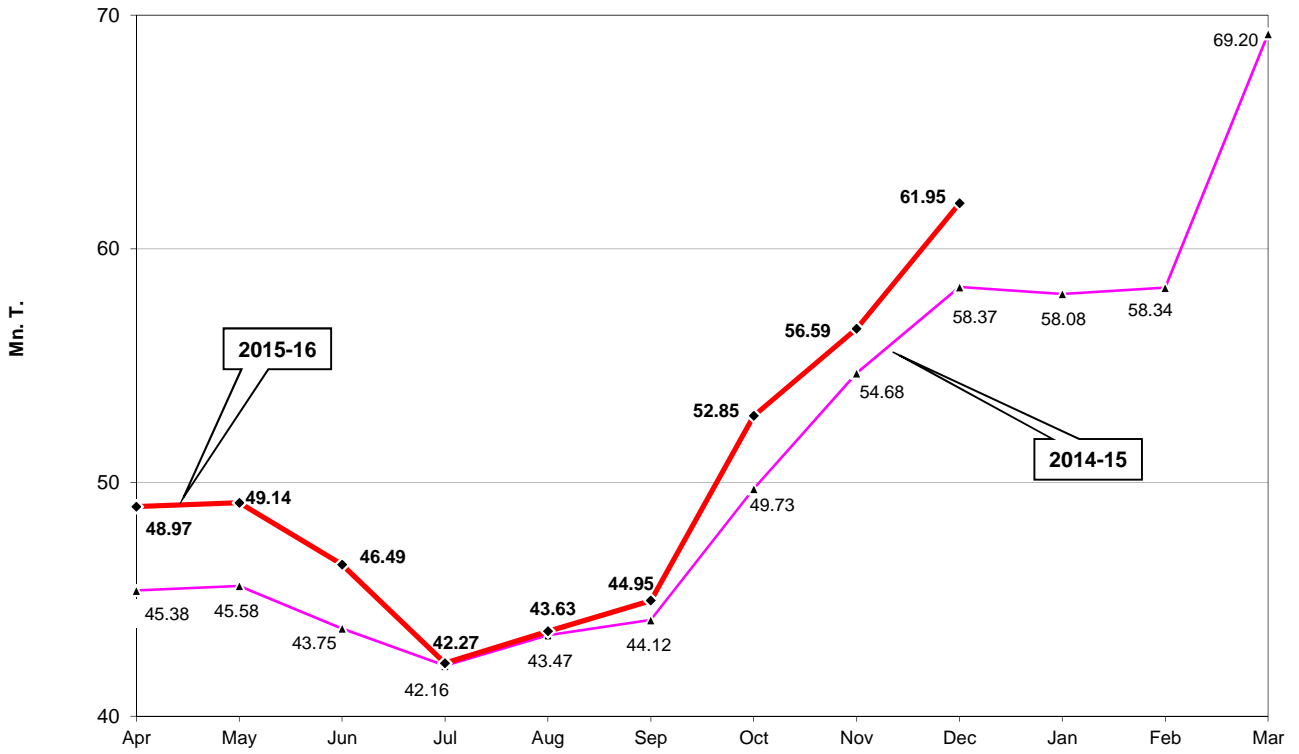
Month-wise Cement Production



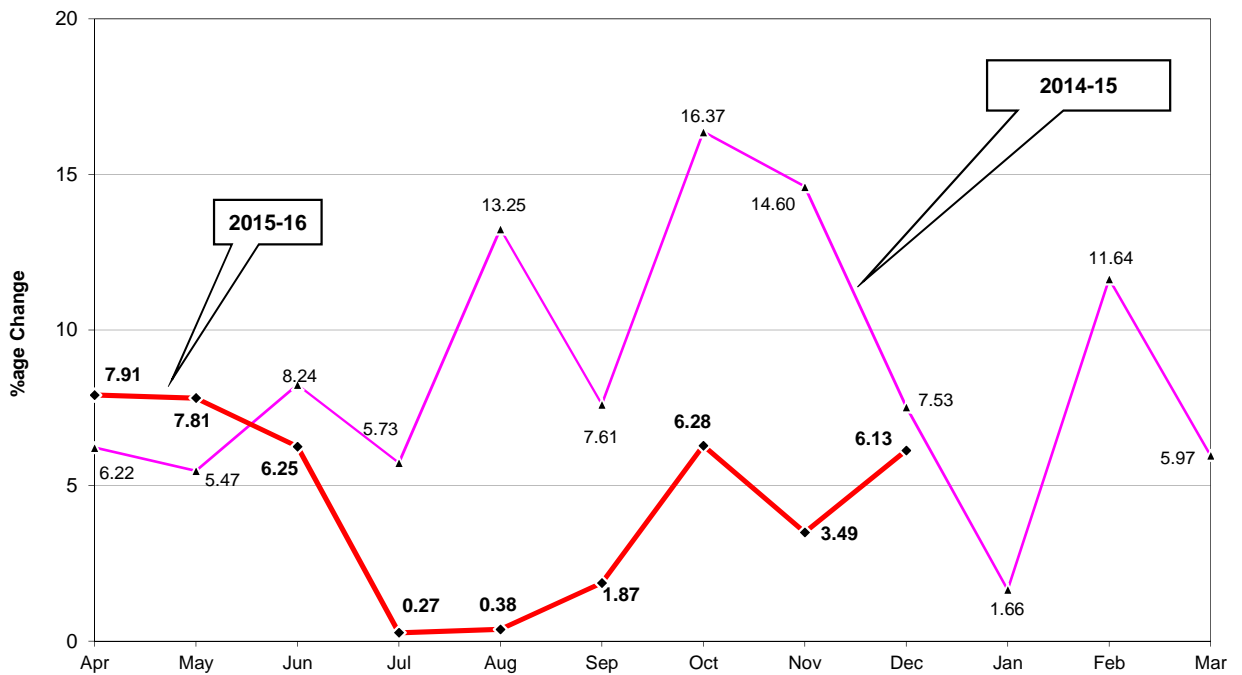
%age Change in Cement Production on MoM Basis



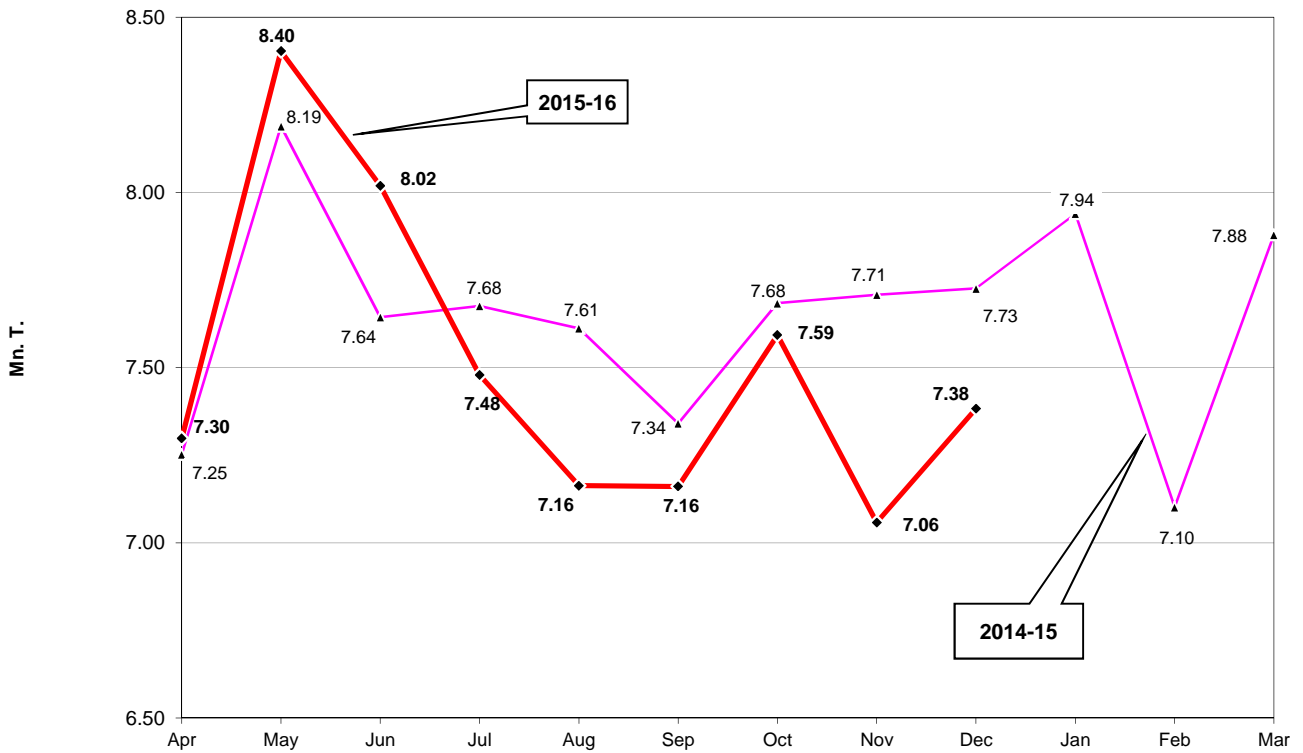
Month-wise Coal Production



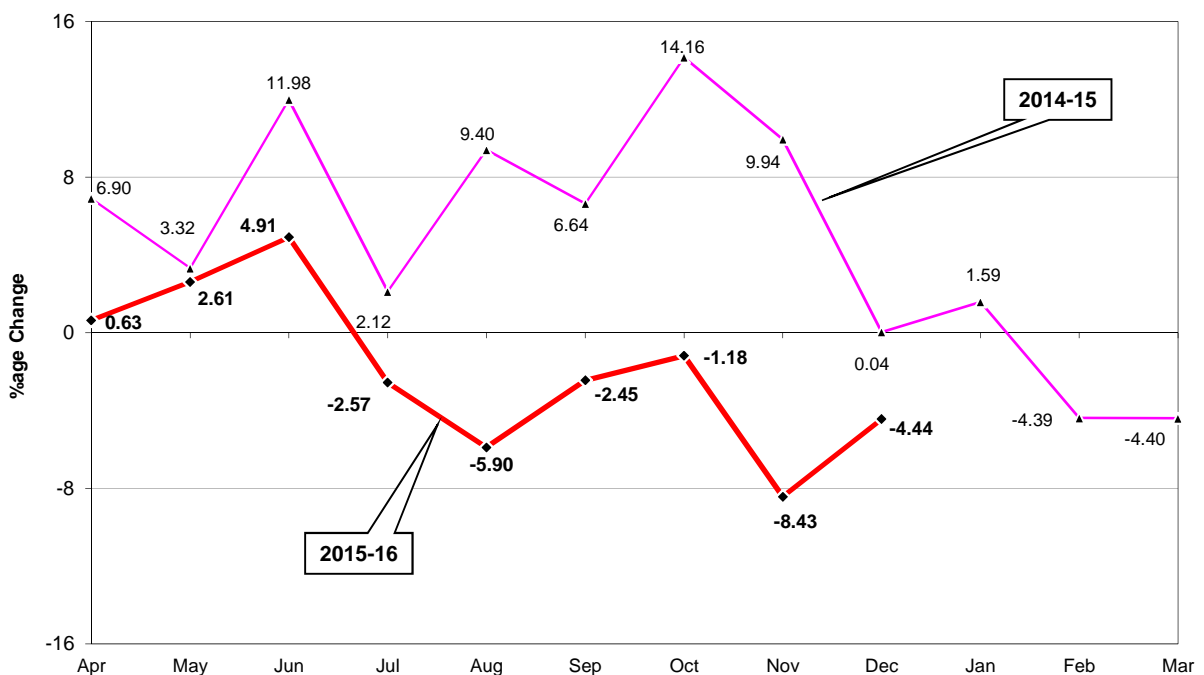
%age Change in Coal Production on MoM Basis



Month-wise Steel Production



%age Change in Steel Production on MoM Basis



Performance of Eight Core Industries
Yearly Index & Growth Rate Base Year:
 2004-05=100

INDEX

| Sector | Weight | 2010-11 | 2011-12 | 2012-13 | 2013-14 | 2014-15 | Apr-Dec 2014-15 | Apr-Dec 2015-16 |
|----------------------|---------------|----------------|----------------|----------------|----------------|----------------|----------------------------|----------------------------|
| Coal | 4.379 | 139.7 | 141.5 | 148.1 | 150.0 | 162.7 | 151.2 | 158.2 |
| Crude Oil | 5.216 | 111.0 | 112.1 | 111.4 | 111.2 | 110.2 | 110.5 | 109.6 |
| Natural Gas | 1.708 | 164.4 | 149.7 | 128.1 | 111.5 | 105.9 | 106.6 | 103.7 |
| Refinery Products | 5.939 | 129.7 | 133.7 | 172.5 | 175.0 | 175.7 | 174.8 | 179.1 |
| Fertilizers | 1.254 | 103.4 | 103.8 | 100.2 | 101.8 | 101.7 | 101.6 | 111.9 |
| Steel | 6.684 | 157.7 | 174.0 | 181.1 | 201.9 | 210.9 | 210.9 | 207.0 |
| Cement | 2.406 | 164.2 | 175.2 | 188.7 | 194.5 | 205.3 | 202.6 | 207.1 |
| Electricity | 10.316 | 138.1 | 149.3 | 155.3 | 164.6 | 178.3 | 180.4 | 187.6 |
| Overall Index | 37.903 | 138.4 | 145.3 | 154.7 | 161.2 | 168.4 | 167.4 | 170.5 |

GROWTH RATES (in %)

| Sector | Weight | 2010-11 | 2011-12 | 2012-13 | 2013-14 | 2014-15 | Apr-Dec 2014-15 | Apr-Dec 2015-16 |
|----------------------|---------------|----------------|----------------|----------------|----------------|----------------|----------------------------|----------------------------|
| Coal | 4.379 | -0.2 | 1.3 | 4.6 | 1.3 | 8.5 | 9.5 | 4.6 |
| Crude Oil | 5.216 | 11.9 | 1.0 | -0.6 | -0.2 | -0.9 | -0.9 | -0.8 |
| Natural Gas | 1.708 | 10.0 | -8.9 | -14.5 | -13.0 | -5.0 | -4.9 | -2.7 |
| Refinery Products | 5.939 | 3.0 | 3.1 | 29.0 | 1.5 | 0.4 | 0.2 | 2.4 |
| Fertilizers | 1.254 | 0.0 | 0.4 | -3.4 | 1.5 | -0.1 | -1.4 | 10.1 |
| Steel | 6.684 | 13.2 | 10.3 | 4.1 | 11.5 | 4.4 | 6.9 | -1.9 |
| Cement | 2.406 | 4.5 | 6.7 | 7.7 | 3.1 | 5.6 | 7.9 | 2.2 |
| Electricity | 10.316 | 5.6 | 8.1 | 4.0 | 6.0 | 8.3 | 10.0 | 4.0 |
| Overall Index | 37.903 | 6.6 | 5.0 | 6.5 | 4.2 | 4.4 | 5.7 | 1.9 |

[#]Refinery Products' yearly growth rate of 2012-13 is not comparable with other years on account of inclusion of RIL (SEZ) production data since April, 2012.

Performance of Eight Core Industries
Monthly Index & Growth Rate Base
Year: 2004-05=100

Index

| Sector | Coal | Crude Oil | Natural Gas | Refinery Products | Fertilizers | Steel | Cement | Electricity | Overall Index |
|---------------|--------------|--------------|--------------|-------------------|--------------|--------------|--------------|---------------|---------------|
| Weight | 4.379 | 5.216 | 1.708 | 5.939 | 1.254 | 6.684 | 2.406 | 10.316 | 37.903 |
| Dec-14 | 186.0 | 113.4 | 110.1 | 186.2 | 108.5 | 213.1 | 211.2 | 177.6 | 174.1 |
| Jan-15 | 185.0 | 112.6 | 108.5 | 185.7 | 111.6 | 218.9 | 217.2 | 175.7 | 174.8 |
| Feb-15 | 185.9 | 101.5 | 95.8 | 166.0 | 97.5 | 195.9 | 205.7 | 164.8 | 161.5 |
| Mar-15 | 220.4 | 113.9 | 107.2 | 182.5 | 96.9 | 217.3 | 217.4 | 175.9 | 177.8 |
| Apr-15 | 156.0 | 106.6 | 100.9 | 161.3 | 87.3 | 201.3 | 213.6 | 176.0 | 162.4 |
| May-15 | 156.5 | 112.5 | 107.8 | 186.0 | 101.8 | 231.7 | 221.3 | 194.0 | 178.6 |
| Jun-15 | 148.1 | 109.5 | 102.9 | 183.9 | 105.3 | 221.1 | 215.0 | 181.8 | 171.2 |
| Jul-15 | 134.7 | 110.7 | 99.0 | 176.2 | 111.3 | 206.3 | 209.7 | 190.3 | 168.0 |
| Aug-15 | 139.0 | 112.8 | 107.2 | 185.1 | 119.0 | 197.5 | 197.2 | 194.3 | 169.6 |
| Sep-15 | 143.2 | 107.4 | 103.9 | 170.3 | 119.4 | 197.5 | 195.8 | 194.4 | 166.8 |
| Oct-15 | 168.4 | 111.3 | 105.6 | 172.5 | 122.1 | 209.4 | 207.4 | 201.1 | 175.4 |
| Nov-15 | 180.3 | 107.3 | 102.6 | 185.9 | 118.4 | 194.6 | 185.9 | 174.2 | 166.8 |
| Dec-15 | 197.4 | 108.7 | 103.4 | 190.2 | 122.6 | 203.6 | 217.9 | 182.4 | 175.7 |

Growth rates

| Sector | Coal | Crude Oil | Natural Gas | Refinery Products | Fertilizers | Steel | Cement | Electricity | Overall Index |
|---------------|--------------|--------------|--------------|-------------------|--------------|--------------|--------------|---------------|---------------|
| Weight | 4.379 | 5.216 | 1.708 | 5.939 | 1.254 | 6.684 | 2.406 | 10.316 | 37.903 |
| Dec-14 | 7.5 | -1.4 | -2.9 | 6.1 | -1.6 | 0.0 | 3.8 | 4.8 | 3.2 |
| Jan-15 | 1.7 | -2.3 | -6.6 | 4.7 | 7.1 | 1.6 | 0.5 | 2.7 | 1.8 |
| Feb-15 | 11.6 | -1.9 | -8.1 | -1.0 | -0.4 | -4.4 | 2.7 | 5.2 | 1.4 |
| Mar-15 | 6.0 | 1.7 | -1.5 | -1.3 | 5.2 | -4.4 | -4.2 | 1.7 | -0.1 |
| Apr-15 | 7.9 | -2.7 | -3.6 | -2.9 | 0.0 | 0.6 | -2.4 | -1.1 | -0.4 |
| May-15 | 7.8 | 0.8 | -3.1 | 7.9 | 1.3 | 2.6 | 2.6 | 5.5 | 4.4 |
| Jun-15 | 6.3 | -0.7 | -5.9 | 7.5 | 5.8 | 4.9 | 2.6 | 0.2 | 3.0 |
| Jul-15 | 0.3 | -0.4 | -4.4 | 2.9 | 8.6 | -2.6 | 1.3 | 3.5 | 1.1 |
| Aug-15 | 0.4 | 5.6 | 3.7 | 5.8 | 12.6 | -5.9 | 5.4 | 5.6 | 2.6 |
| Sep-15 | 1.9 | -0.1 | 0.9 | 0.5 | 18.1 | -2.5 | -1.5 | 10.8 | 3.2 |
| Oct-15 | 6.3 | -2.1 | -1.8 | -4.4 | 16.2 | -1.2 | 11.7 | 8.8 | 3.2 |
| Nov-15 | 3.5 | -3.3 | -3.9 | 2.5 | 13.5 | -8.4 | -1.8 | 0.0 | -1.3 |
| Dec-15 | 6.1 | -4.1 | -6.1 | 2.1 | 13.1 | -4.4 | 3.2 | 2.7 | 0.9 |
