

(A) CEMENT PRODUCTION

(Million Tonnes)

MONTH	2017-2018		2016-2017		2015-2016		(%AGE) VARIATION (M-O-M)		(%AGE) VARIATION (Y-O-Y) 2017-2018	
	FOR MONTH	CUM	FOR MONTH	CUM	FOR MONTH	CUM	2017-18	2016-17	MONTH	YEAR
	Apr	23.38	23.38	24.68	24.68	23.66	23.66	-7.24	-8.77	-5.24
May	24.60	47.98	24.94	49.62	24.29	47.95	5.19	1.07	-1.38	-3.30
Jun	25.24	73.22	26.10	75.72	23.62	71.57	2.61	4.64	-3.29	-3.30
Jul	22.69	95.91	23.16	98.88	23.01	94.58	-10.09	-11.25	-2.02	-3.00
Aug	22.44	118.35	22.28	121.16	21.62	116.20	-1.12	-3.80	0.70	-2.32
Sep	22.91	141.27	22.88	144.05	21.44	137.64	2.11	2.70	0.12	-1.93
Oct			24.26	168.31	22.84	160.47		6.02		
Nov			20.52	188.82	20.41	180.88		-15.44		
Dec			22.00	210.82	24.11	204.99		7.24		
Jan			22.49	233.31	25.93	230.91		2.22		
Feb			21.45	254.77	25.49	256.41		-4.60		
Mar			25.21	279.98	27.05	283.46		17.50		

(B) COAL PRODUCTION

(Million Tonnes)

MONTH	2017-2018		2016-2017		2015-2016		(%AGE) VARIATION (M-O-M)		(%AGE) VARIATION (Y-O-Y) 2017-2018	
	FOR MONTH	CUM	FOR MONTH	CUM	FOR MONTH	CUM	2017-18	2016-17	MONTH	YEAR
	Apr	47.38	47.38	49.00	49.00	49.88	49.88	-39.20	-30.45	-3.30
May	51.38	98.76	53.06	102.07	50.06	99.94	8.43	8.29	-3.18	-3.24
Jun	49.47	148.23	53.03	155.09	47.31	147.26	-3.72	-0.06	-6.72	-4.43
Jul	45.28	193.51	44.99	200.08	43.21	190.47	-8.46	-15.16	0.65	-3.29
Aug	46.52	240.03	40.36	240.45	44.69	235.15	2.74	-10.28	15.26	-0.17
Sep	47.48	287.51	42.94	283.39	46.02	281.18	2.07	6.39	10.57	1.45
Oct			52.79	336.18	53.80	334.97		22.93		
Nov			60.91	397.09	57.39	392.36		15.37		
Dec			65.28	462.37	62.99	455.35		7.18		
Jan			66.24	528.60	63.99	519.35		1.46		
Feb			65.00	593.60	60.98	580.33		-1.86		
Mar			77.93	671.53	70.46	650.79		19.88		

(C) STEEL PRODUCTION

(Million Tonnes)

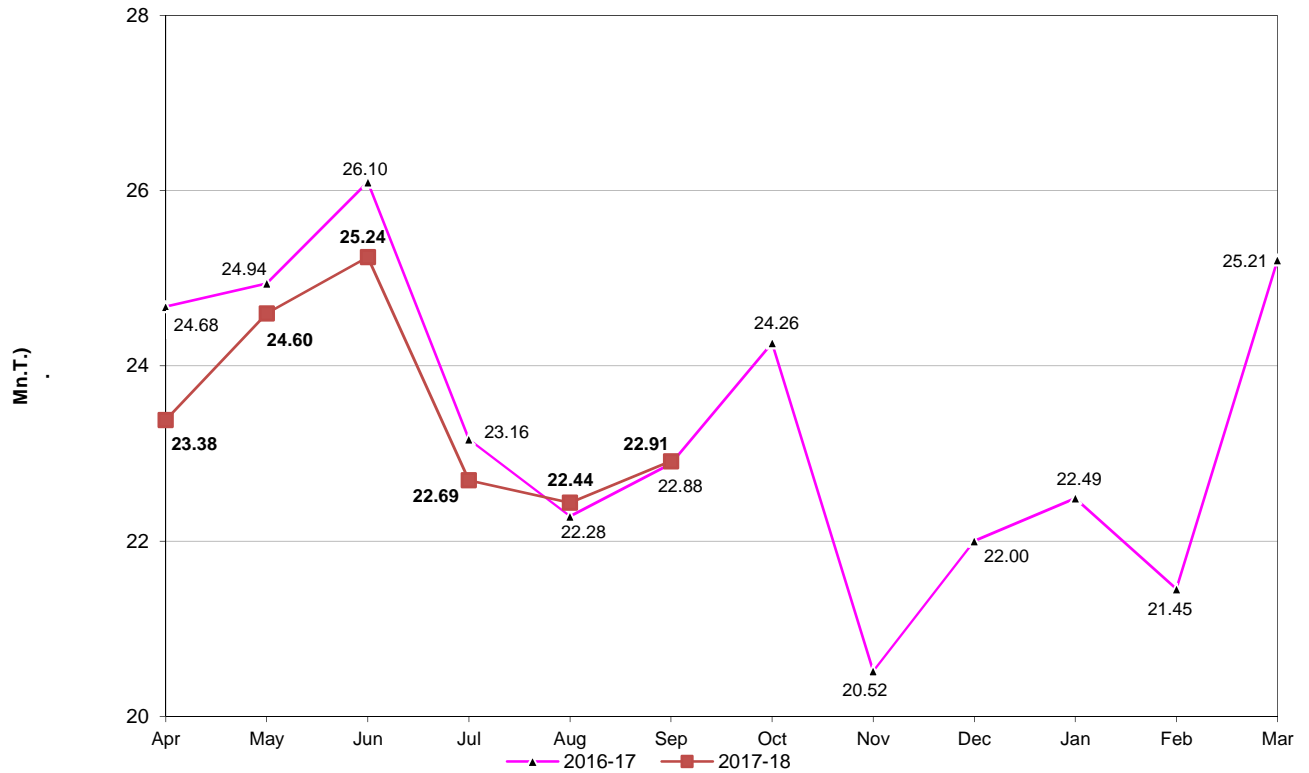
MONTH	2017-2018		2016-2017		2015-2016		(%AGE) VARIATION (M-O-M)		(%AGE) VARIATION (Y-O-Y) 2017-2018	
	FOR MONTH	CUM	FOR MONTH	CUM	FOR MONTH	CUM	2017-18	2016-17	MONTH	YEAR
	Apr	8.46	8.46	7.76	7.76	7.43	7.43	-8.31	-6.63	9.04
May	9.02	17.47	8.68	16.44	7.65	15.08	6.59	11.92	3.84	6.29
Jun	8.71	26.18	8.21	24.65	7.55	22.63	-3.41	-5.41	6.04	6.21
Jul	8.26	34.44	7.57	32.22	7.57	30.19	-5.11	-7.84	9.18	6.91
Aug	8.77	43.21	8.58	40.80	7.36	37.55	6.14	13.41	2.18	5.91
Sep	8.75	51.97	8.44	49.24	7.27	44.82	-0.21	-1.64	3.67	5.53
Oct			8.52	57.77	7.26	52.08		0.97		
Nov			7.58	65.34	7.19	59.27		-11.13		
Dec			8.67	74.02	7.49	66.76		14.51		
Jan			8.99	83.01	8.08	74.84		3.69		
Feb			8.51	91.52	7.83	82.67		-5.36		
Mar			9.23	100.75	8.31	90.98		8.38		

Y-O-Y- Indicates comparison of a given month/year with corresponding month/period of the previous year.

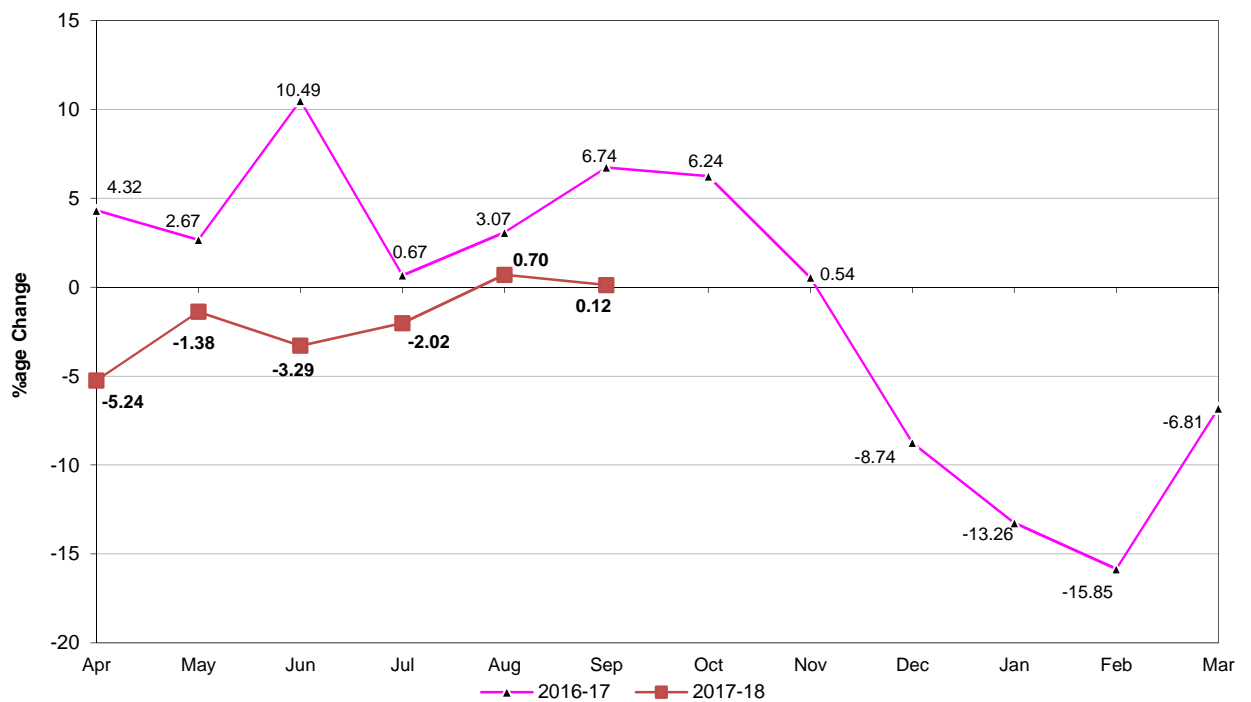
M-O-M -Indicates comparison of figures of a month with the preceding month.

Graphs prepared on the basis of data obtained from the official site of the Economic Advisor,  
Ministry of Commerce & Industry ([www.eaindustry.nic.in](http://www.eaindustry.nic.in))

### Month-wise Cement Production

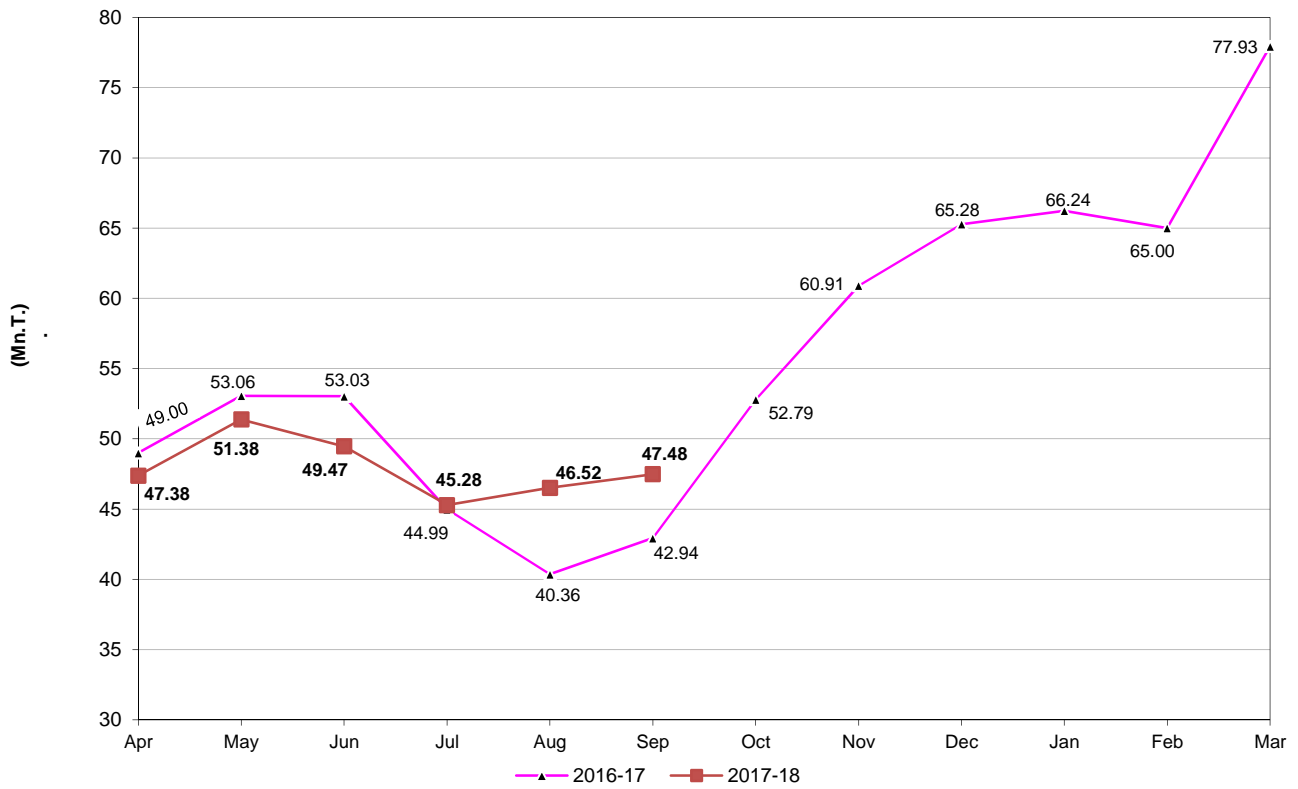


### %age Change in Cement Production over previous year's month production

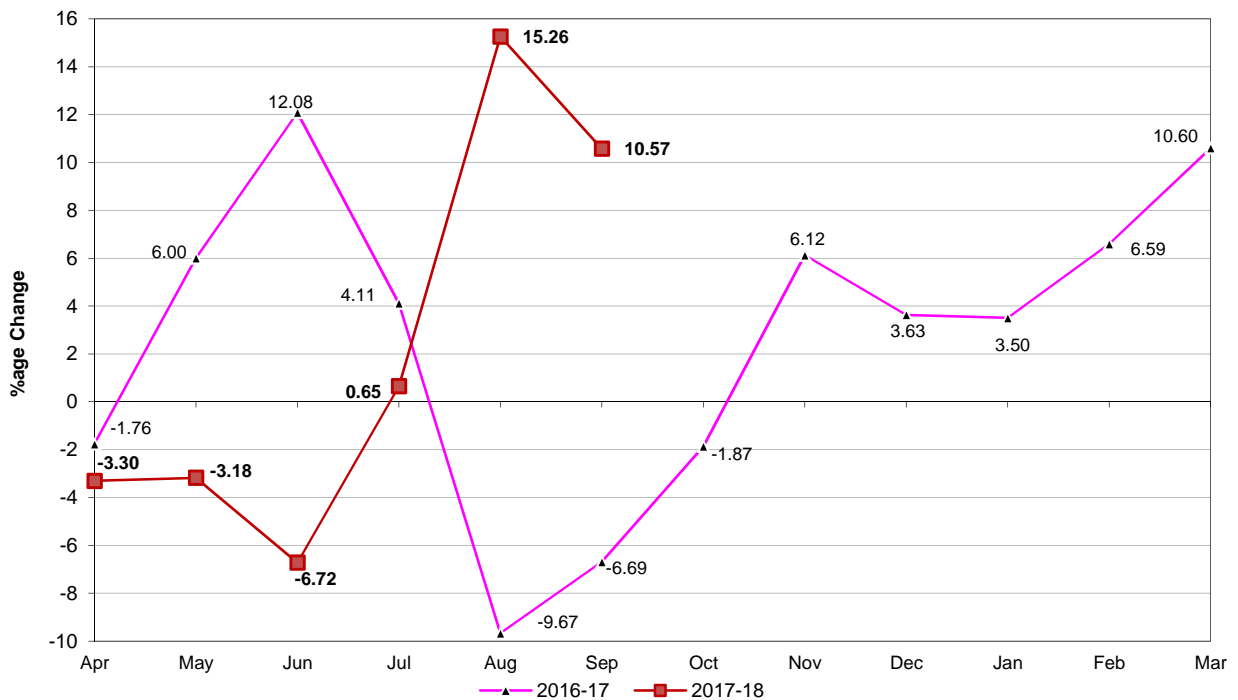


Graphs prepared on the basis of data obtained from the official site of the Economic Advisor,  
Ministry of Commerce & Industry ([www.eaindustry.nic.in](http://www.eaindustry.nic.in))

### Month-wise Coal Production

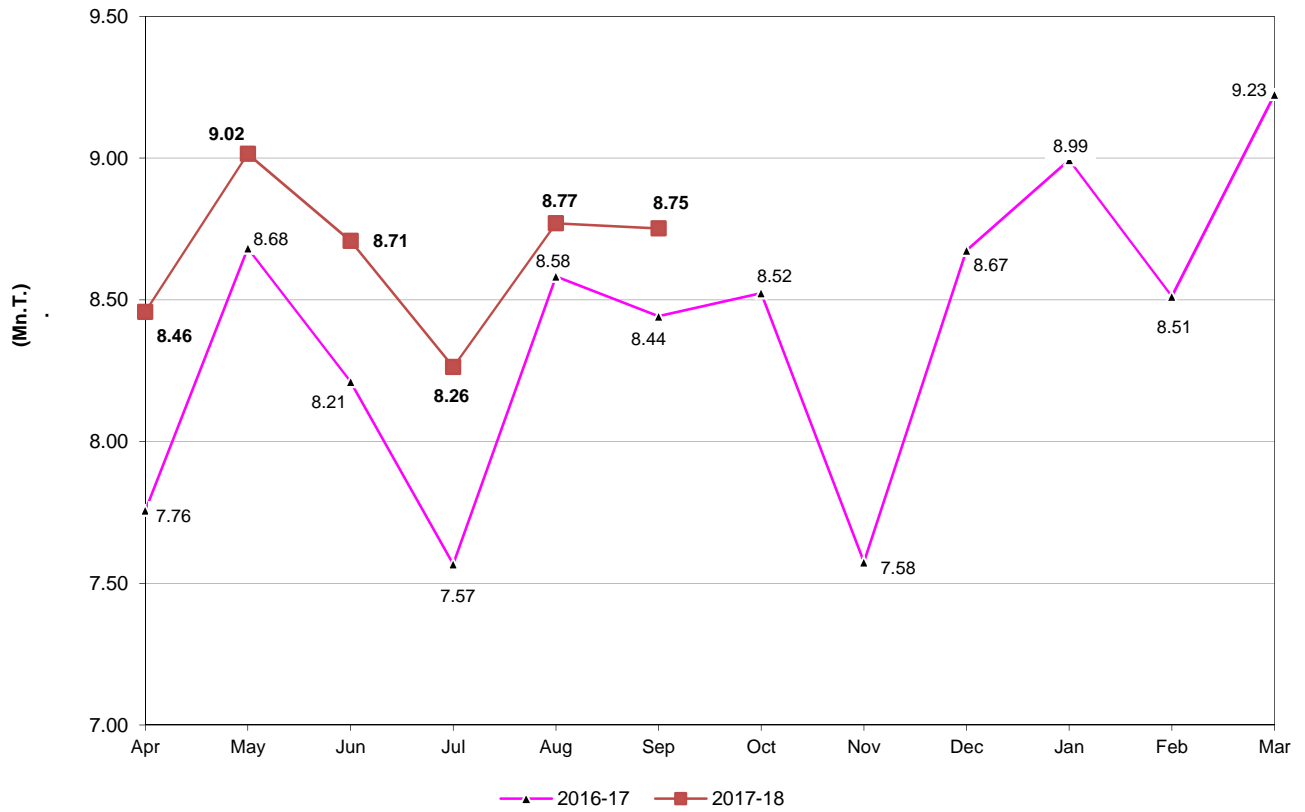


### %age Change in Coal Production over previous year's month production

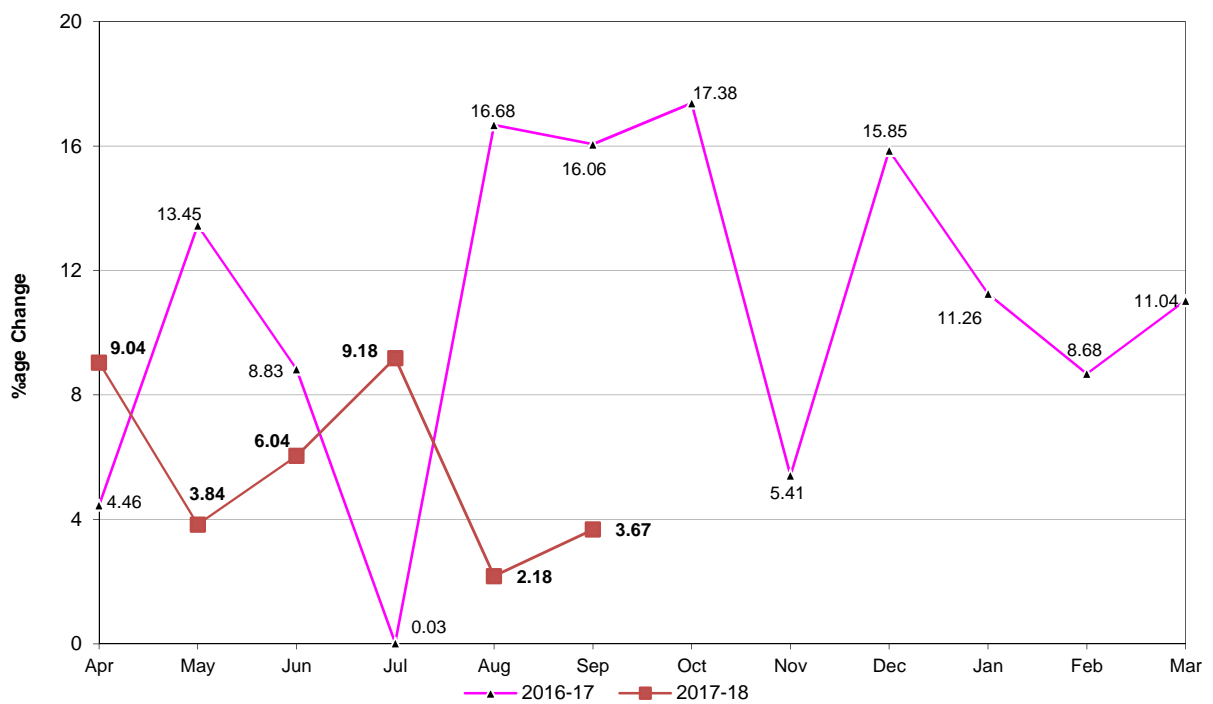


Graphs prepared on the basis of data obtained from the official site of the Economic Advisor,  
Ministry of Commerce & Industry ([www.eaindustry.nic.in](http://www.eaindustry.nic.in))

### Month-wise Steel Production



### %age Change in Steel Production over previous year's month production



Performance of Eight Core Industries  
Yearly Index & Growth Rate Base Year:  
2011-12=100

**Index**

Sector	Weight	2012-13	2013-14	2014-15	2015-16	2016-17	Apr2016- -Sep 17	Apr-Sep 2017-18
Coal	10.3335	103.2	104.2	112.6	118.0	121.8	102.8	104.3
Crude Oil	8.9833	99.4	99.2	98.4	97.0	94.5	94.8	94.6
Natural Gas	6.8768	85.6	74.5	70.5	67.2	66.5	65.5	68.8
Refinery Products	28.0376	107.2	108.6	108.8	114.1	119.7	118.2	120.7
Fertilizers	2.6276	96.7	98.1	99.4	106.4	106.6	106.2	104.0
Steel	17.9166	107.9	115.8	121.7	120.2	133.1	130.1	137.3
Cement	5.3720	107.5	111.5	118.1	123.5	122.0	125.5	123.1
Electricity	19.8530	104.0	110.3	126.6	133.8	141.6	144.2	152.7
<b>Overall Index</b>	<b>100.0000</b>	<b>103.8</b>	<b>106.5</b>	<b>111.7</b>	<b>115.1</b>	<b>120.5</b>	<b>118.3</b>	<b>122.1</b>

**Growth Rates (in per cent)**

Sector	Weight	2012-13	2013-14	2014-15	2015-16	2016-17	Apr2016- Sep -17	Apr-Sep 2017-18
Coal	10.3335	3.2	1.0	8.0	4.8	3.2	0.8	1.5
Crude Oil	8.9833	-0.6	-0.2	-0.9	-1.4	-2.5	-3.3	-0.2
Natural Gas	6.8768	-14.4	-12.9	-5.3	-4.7	-1.0	-4.3	5.0
Refinery Products	28.0376	7.2	1.4	0.2	4.9	4.9	7.3	2.1
Fertilizers	2.6276	-3.3	1.5	1.3	7.0	0.2	1.5	-2.1
Steel	17.9166	7.9	7.3	5.1	-1.3	10.7	9.9	5.5
Cement	5.3720	7.5	3.7	5.9	4.6	-1.2	4.7	-1.9
Electricity	19.8530	4.0	6.1	14.8	5.7	5.8	6.5	6.0
<b>Overall Index</b>	<b>100.0000</b>	<b>3.8</b>	<b>2.6</b>	<b>4.9</b>	<b>3.0</b>	<b>4.8</b>	<b>5.4</b>	<b>3.3</b>

Performance of Eight Core Industries

**Monthly Index & Growth Rate**

Base Year: 2011-12=100 **Index**

Sector	Coal	Crude Oil	Natural Gas	Refinery Products	Fertilizers	Steel	Cement	Electricity	Overall Index
<b>Weight</b>	10.3335	8.9833	6.8768	28.0376	2.6276	17.9166	5.3720	19.8530	<b>100.0000</b>
<b>Sep-16</b>	93.4	91.9	64.7	113.5	114.1	133.8	119.7	145.6	<b>116.5</b>
<b>Oct-16</b>	114.9	96.1	69.0	122.9	113.4	135.1	126.9	145.1	<b>122.5</b>
<b>Nov-16</b>	132.5	90.6	66.9	116.5	111.5	120.1	107.3	134.9	<b>116.1</b>
<b>Dec-16</b>	142.0	96.2	68.4	124.9	108.8	137.5	115.0	137.8	<b>124.1</b>
<b>Jan-17</b>	144.1	96.9	68.4	122.0	107.2	142.6	117.6	138.9	<b>124.8</b>
<b>Feb-17</b>	141.4	88.1	63.2	112.1	97.2	134.9	112.2	130.2	<b>116.9</b>
<b>Mar-17</b>	169.5	97.4	69.1	128.9	103.6	146.2	131.8	147.9	<b>132.5</b>
<b>Apr-17</b>	103.1	92.6	63.5	116.0	89.0	134.1	122.3	150.6	<b>118.7</b>
<b>May-17</b>	111.8	97.6	69.7	125.4	98.3	142.9	128.6	158.1	<b>126.8</b>
<b>Jun-17</b>	107.6	94.1	69.3	119.4	107.3	138.0	132.0	147.4	<b>121.7</b>
<b>Jul-17</b>	98.5	96.4	72.2	119.3	108.6	131.0	118.7	151.8	<b>120.1</b>
<b>Aug-17</b>	101.2	95.1	69.5	121.6	115.4	139.0	117.3	155.4	<b>123.0</b>
<b>Sep-17</b>	103.3	92.0	68.8	122.7	105.3	138.7	119.8	153.1	<b>122.5</b>

**Growth Rates (in per cent)**

Sector	Coal	Crude Oil	Natural Gas	Refinery Products	Fertilizers	Steel	Cement	Electricity	Overall Index
<b>Weight</b>	10.3335	8.9833	6.8768	28.0376	2.6276	17.9166	5.3720	19.8530	<b>100.0000</b>
<b>Sep-16</b>	-6.7	-4.1	-5.9	6.9	0.3	16.1	6.7	5.1	<b>5.3</b>
<b>Oct-16</b>	-1.9	-3.2	-1.5	12.6	0.7	17.4	6.2	3.0	<b>7.1</b>
<b>Nov-16</b>	6.1	-5.4	-2.1	-0.7	4.2	5.4	0.5	9.5	<b>3.2</b>
<b>Dec-16</b>	3.6	-0.8	-0.4	5.4	-2.9	15.9	-8.7	6.4	<b>5.6</b>
<b>Jan-17</b>	3.5	1.3	11.6	0.0	-1.2	11.3	-13.3	5.2	<b>3.4</b>
<b>Feb-17</b>	6.6	-3.4	-2.1	-2.8	-4.0	8.7	-15.8	1.2	<b>0.6</b>
<b>Mar-17</b>	10.6	0.9	9.6	2.0	-3.0	11.0	-6.8	6.2	<b>5.2</b>
<b>Apr-17</b>	-3.3	-0.6	2.0	0.2	6.2	9.0	-5.2	5.3	<b>2.6</b>
<b>May-17</b>	-3.2	0.7	4.5	5.4	-5.9	3.8	-1.4	8.2	<b>3.9</b>
<b>Jun-17</b>	-6.7	0.6	6.4	-0.2	-2.7	6.0	-3.3	2.2	<b>1.0</b>
<b>Jul-17</b>	0.6	-0.5	6.6	-2.7	0.2	9.2	-2.0	6.5	<b>2.6</b>
<b>Aug-17</b>	15.3	-1.6	4.2	2.4	-0.7	2.2	0.7	8.3	<b>4.4</b>
<b>Sep-17</b>	10.6	0.1	6.3	8.1	-7.7	3.7	0.1	5.2	<b>5.2</b>

\*\*\*\*\*